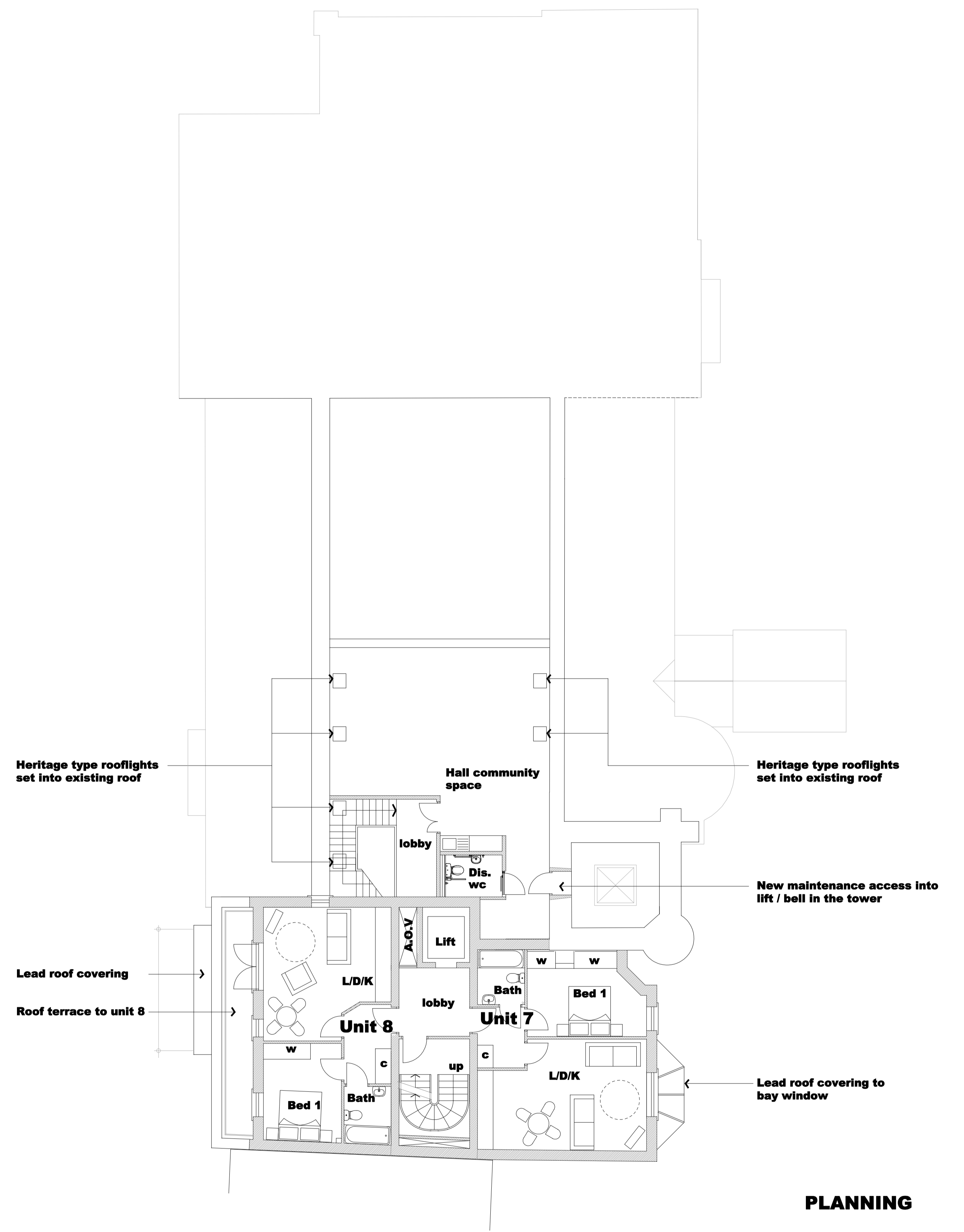


Gross Internal Area: Unit 5; 50.6 sq.m (545 sq.ft); Unit 6; 60.96 sq.m (656 sq.ft) + 5.67 sq.m (61 sq.ft) external  
**SECOND FLOOR (Residential) FIRST FLOOR (Church)**



Gross Internal Area: Unit 7; 47.64 sq.m (513 sq.ft); Unit 8; 44.1 sq.m (475 sq.ft) + 10.6 sq.m (114 sq.ft) external  
**THIRD FLOOR (Residential) SECOND FLOOR (Church)**

**PLANNING**